

0353-020

Palm Beach Park of Commerce, P.I.P.D. - Plat 13

Being a replat of Lots 2G, 3G, 5L, and 6L, *Palm Beach Park of Commerce, a P.I.P.D., Plat No. 1*,
Plat Book 56, Page 172-176, lying within Section 18, Township 41 South, Range 41 East,
Palm Beach County, Florida

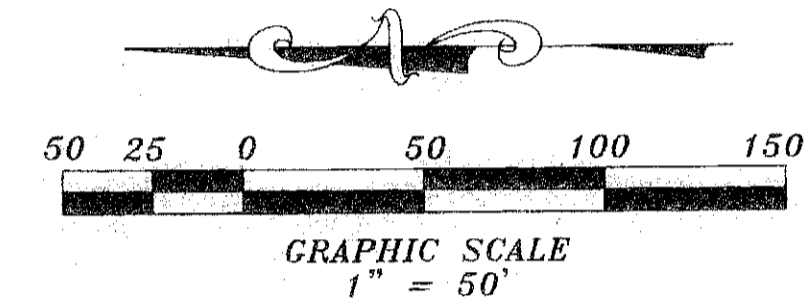
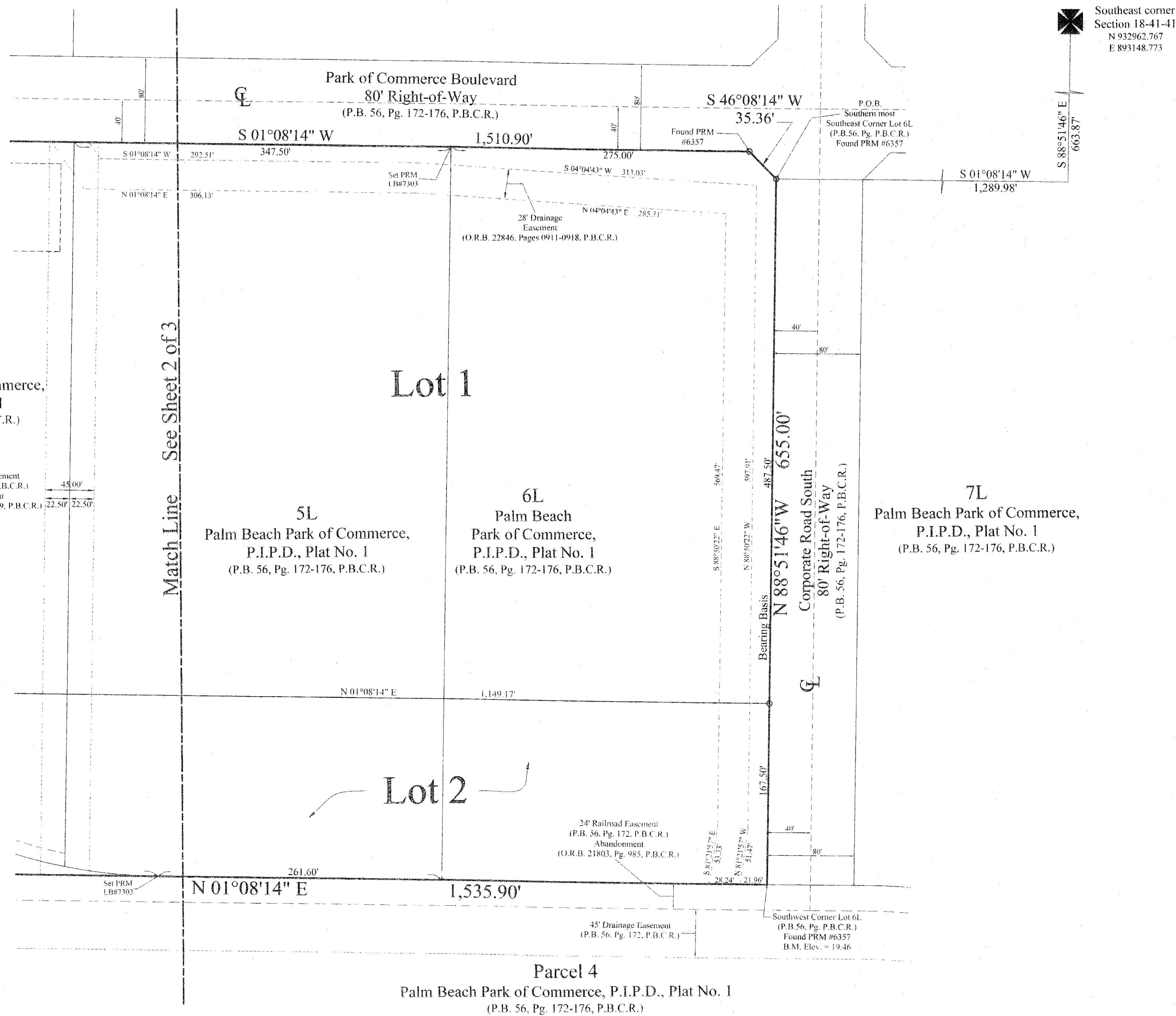
197

State of Florida
County of Palm Beach
This plat was filed for
record at _____ M.
This _____ day of _____
A.D. 2008 and duly recorded
in Plat Book _____ on
Pages _____ and _____.

Sharon R. Bock
Clerk & Comptroller
Palm Beach County

By: _____
Deputy Clerk

Sheet 3 of 3



Bearing Reference:

The Bearings shown hereon are referenced to the South Line of Lot 6L, as shown on the plat of *Palm Beach Park of Commerce, A P.I.P.D., Plat No. 1*, as recorded in Plat Book 56, Page 172-176, of the Public Records of Palm Beach County, Florida. Said Line bears *North 88°51'46" West*.

Legend:

- P.O.B. = Point of Beginning
- P.O.C. = Point of Commencement
- P.B. = Plat Book
- Pg. = Page
- P.B.C.R. = Palm Beach County Records
- O.R.B. = Official Records Book
- R/W = Right-Of-Way
- CL = Centerline

2G
Palm Beach Park of Commerce,
P.I.P.D., Plat No. 1
(P.B. 56, Pg. 172-176, P.B.C.R.)

45' Drainage Easement
(P.B. 56, Pg. 172, P.B.C.R.)
Abandonment
(O.R.B. 22846, Pg. 0919, P.B.C.R.)

5L
Palm Beach Park of Commerce,
P.I.P.D., Plat No. 1
(P.B. 56, Pg. 172-176, P.B.C.R.)

6L
Palm Beach
Park of Commerce,
P.I.P.D., Plat No. 1
(P.B. 56, Pg. 172-176, P.B.C.R.)

7L
Palm Beach Park of Commerce,
P.I.P.D., Plat No. 1
(P.B. 56, Pg. 172-176, P.B.C.R.)

Parcel 4
Palm Beach Park of Commerce, P.I.P.D., Plat No. 1
(P.B. 56, Pg. 172-176, P.B.C.R.)



Patriot Surveying and Mapping, Inc.
3748 NW 124th Avenue
Coral Springs, Florida 33065
Phone: (954) 509-0083 Fax: (866) 495-0203
LB # 7303